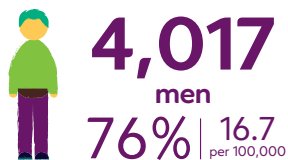
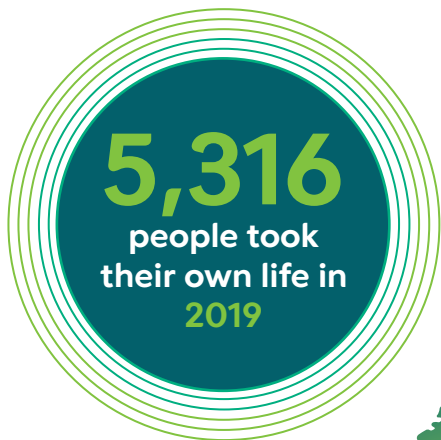


Suicides in England



Men aged 45–49 have highest suicide rate

Age groups with highest rate per 100,000



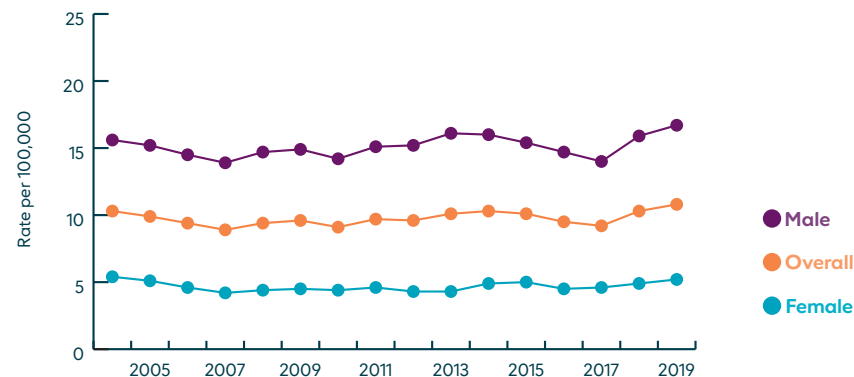
Suicide rates increased for people aged 25–29 and 55–59.

The suicide rate for men aged 25–29 increased by 19.2% between 2018 and 2019. The rate for this group is the highest it has been since 2003.

Men 25–29 years



Suicide rate per 100,000 in England 2004–2019



Suicide rate has risen by 5%

The **male suicide** rate has increased by **5%** between 2018 and 2019.

The **female suicide** rate increased by **6%** between 2018 and 2019.

Notes about data: Data source – Office for National Statistics (ONS). Suicide refers to deaths where the underlying cause is **intentional self-harm** and **events of undetermined intent**. Increases/ decreases are based on one year of data and may not reflect longer term trends. Overall rates for women, men and all persons are age standardised. Rates broken down by age group are crude.