

SAMARITANS

**SUICIDE IN THE UK AND REPUBLIC OF
IRELAND**

STATISTICS 1999-2008

Contents

	Page
Suicide in the UK and Republic of Ireland	3
Table A: ICD Codes for Suicide	3
Trends 1999-2008	4
Graph A: Summary - Number of Suicides and Undetermined Deaths in UK and ROI 1999-2008	5
Table B: Summary - Number of Suicides and Undetermined Deaths in UK and ROI 1999-2008	5
Graph B: Average Annual Number of Suicides and Undetermined Deaths in UK and ROI 1999-2008	6
Table C: Summary - Average Annual Number of Suicides and Undetermined Deaths in UK and ROI 1999-2008	6
Graph C: Rate of Suicides and Undetermined Deaths per 100,000 population UK & ROI 1999-2008	7
Table D: Summary - Rate of Suicides and Undetermined Deaths per 100,000 population UK & ROI 1999-2008	7
Graph D: Average Annual Rate of Suicides and Undetermined Deaths per 100,000 population in UK & ROI 1999-2008	8
Table E: Average Annual Rate of Suicides and Undetermined Deaths per 100,000 population in UK & ROI 1999-2008	8
Table F: Number and Rate of Suicides and Undetermined Deaths by Age and Sex in UK and ROI 1999-2008	9
Table G: Number and Rate of Suicides and Undetermined Deaths by Age and Sex in United Kingdom 1999-2008	10
Table H: Number and Rate of Suicides and Undetermined Deaths by Age and Sex in England 1999-2008	11
Table I: Number and Rate of Suicides and Undetermined Deaths by Age and Sex in Northern Ireland 1999-2008	12
Table J: Number and Rate of Suicides by Age and Sex in Republic of Ireland 1999-2008	13
Table K: Number and Rate of Suicides and Undetermined Deaths by Age and Sex in Scotland 1999-2008	14
Table L: Number and Rate of Suicides and Undetermined Deaths by Age and Sex in Wales 1999-2008	15

Last updated 19th January 2010

Feedback on this pack and further information:

Please direct any feedback on the contents of this report and requests for further information to the Research Officer, Elizabeth Thompson at Samaritans General Office. Direct Line: 020 8394 8330 or email e.thompson@samaritans.org

Media contacts:

If you're working in the media and would like to speak to someone about Samaritans, please contact the press office by calling the main switchboard number at Samaritans General Office, 020 8394 8300, or email r.clark@samaritans.org

For all other enquiries:

Samaritans General Office, The Upper Mill, Kingston Road, Ewell, KT17 2AF.
Switchboard: Tel: 020 8394 8300 or by email admin@samaritans.org

SUICIDE IN THE UK AND REPUBLIC OF IRELAND

This leaflet includes statistics on trends in suicide in each of the nations within the UK and Republic of Ireland. Full tables provide information about the number and rates of suicide by age and sex for each of the nations for 1999-2008.

NOTES

Data exclude suicides registered in Crown Dependencies (Isle of Man, States of Jersey, States of Guernsey) where there are Samaritans branches.

Data are compiled using codes as described in Table A below.

Table A: ICD Codes for Suicide		
Year(s)	ICD System	Codes for Suicide
1999-2000	ICD-9	E950-E959 (intentional self-harm), E980-E989* (undetermined intent) excluding E988.9 (inquest adjourned)
2001-2006	ICD-10	X60-X84 (Intentional self-harm), Y10-Y34* (undetermined intent) excluding Y33.9 (inquest adjourned)
2007-2008	ICD-10	X60-X84 (Intentional self-harm), Y10-Y34* (undetermined intent) Y87.0** (sequelae of intentional self-harm), Y87.2** (sequelae of undetermined intent)

*deaths of undetermined intent are not included for Republic of Ireland

** sequelae of intentional self-harm and undetermined intent are included only for Northern Ireland and Scotland

The individual countries within the United Kingdom and Republic of Ireland release their statistics at different times.

The data presented here are the latest available. As new statistics are released, we add them to our website:

http://www.samaritans.org/about_samaritans/facts_and_figures.aspx

It is anticipated that 2009 data for Scotland and the Republic of Ireland will be available in August 2010 and 2009 data for England, Wales, and Northern Ireland will be updated in December 2010.

Tables F-L below present suicide and undetermined death data for the United Kingdom and the Republic of Ireland between 1999-2008. Each table presents data on the number of suicides in each year, and includes totals for males and females by age group. The rate of suicide per 100,000 in each age group, for the population as a whole, and for those aged 15 or over in the population are also presented in each table.

SOURCES

England and Wales, Office for National Statistics; Scotland, General Register Office for Scotland, Northern Ireland, NI Statistics Agency; Ireland, Central Statistics Office.

Data include deaths registered in the appropriate calendar year as deaths from intentional self-harm and deaths from undetermined intent for England, Wales, Northern Ireland and Scotland. Data for the Republic of Ireland refer to intentional self-harm only.

INTRODUCTION

As the methods for collecting information on suicide vary widely within the United Kingdom and also between the UK and the Republic of Ireland, international comparisons of suicide rates should be made with caution. Including deaths of undetermined intent, which include coroners' open verdicts, is common research practice and goes some way towards reducing the margins of error created by the varying definitions and rules applied by different countries to arrive at suicide verdicts. However, the procedure is so different in the Republic of Ireland that it is more accurate not to include deaths of undetermined intent.

Trends 1999-2008

Graphs A-D and Tables B-E on the following pages present the numbers and rates of suicides registered in each of the nations for each year between 1999 and 2008 and also averages for 3 year blocks between 1999 and 2008.

Between 1999-2001 and 2006-2008, the following changes occurred in numbers of suicides:

- 7% decrease in Scotland
- 9% decrease in the United Kingdom and Republic of Ireland
- 9% decrease in the United Kingdom
- 11% decrease in the Republic of Ireland
- 11% decrease in Wales
- 12% decrease in England
- 64% increase in Northern Ireland

Graph A: Suicides and Undetermined Deaths UK & ROI 1999-2008

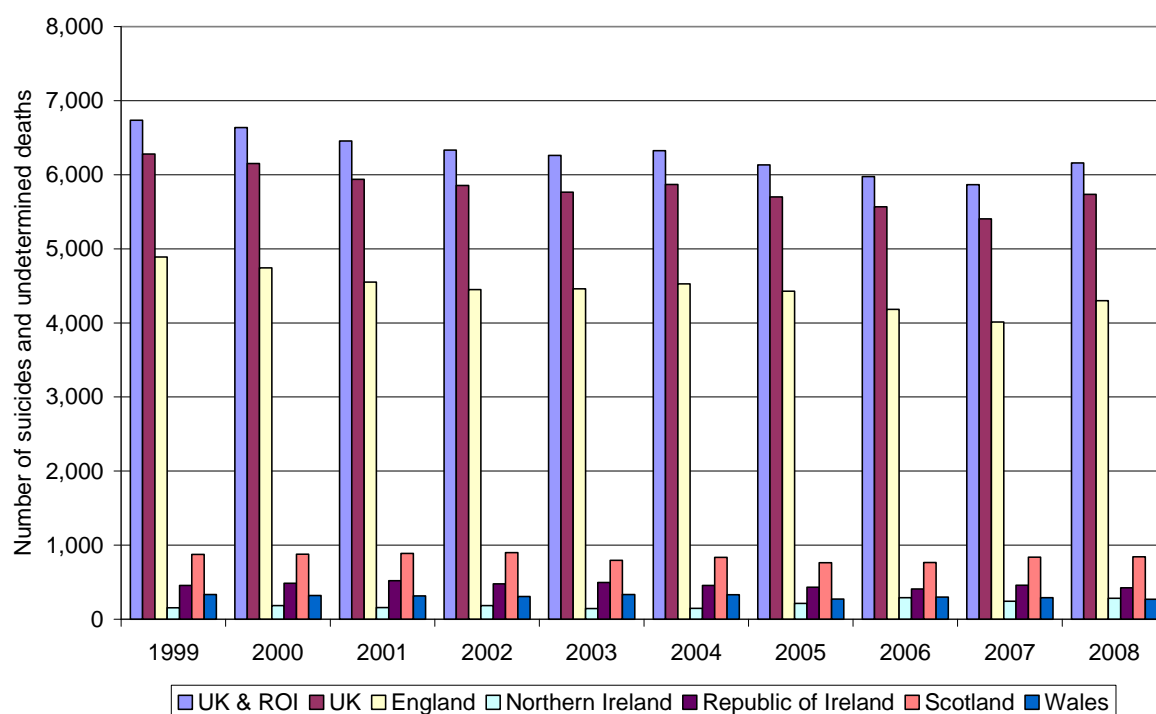


Table B: Summary – Number of Suicides and Undetermined Deaths in UK & ROI 1999-2008

	1999	2000	2001	2002	2003	2004	2005	2006	2007	2008
UK & ROI	6735	6638	6456	6332	6262	6326	6132	5976	5865	6159
UK	6280	6152	5937	5854	5765	5869	5701	5567	5405	5735
England	4889	4744	4551	4449	4459	4526	4427	4183	4011	4301
Northern Ireland	154	185	158	183	144	146	213	291	242	282
Republic of Ireland	455	486	519	478	497	457	431	409	460	424
Scotland	874	878	887	899	794	835	763	765	838	843
Wales	334	321	314	306	334	331	273	299	290	269

Graph B: Average Annual Number of Suicides and Undetermined Deaths UK & ROI 1999-2008

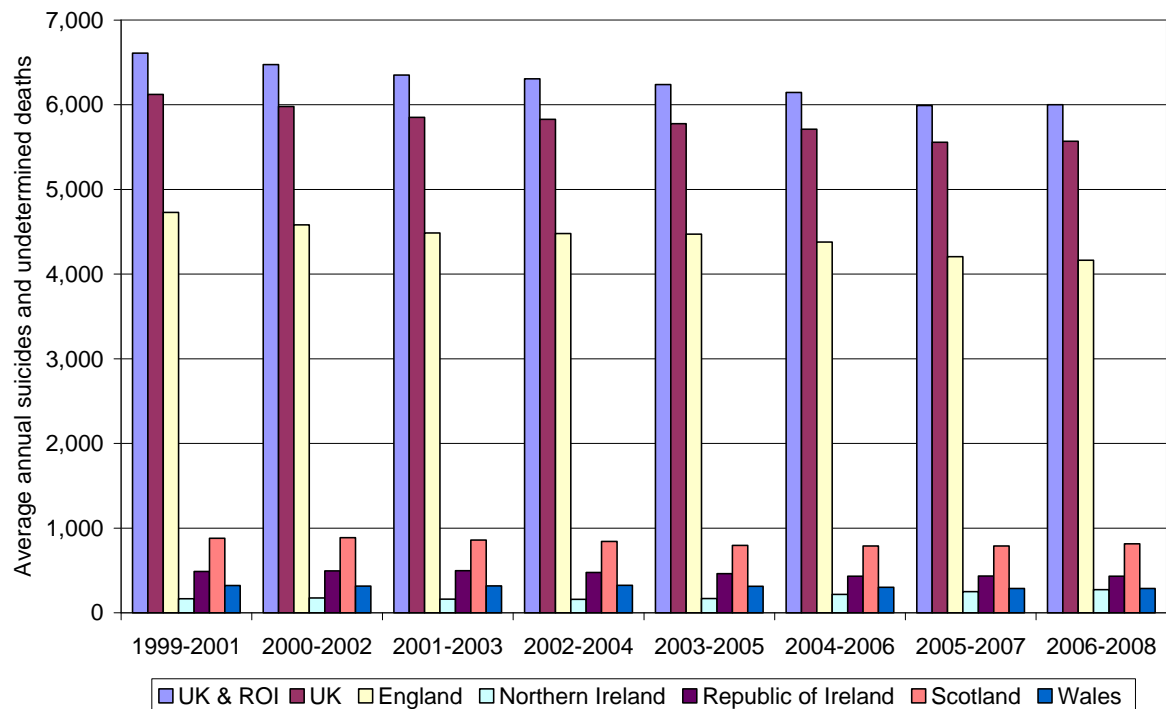


Table C: Summary – Annual Average Number of Suicides and Undetermined Deaths in UK & ROI 1999-2008

	1999-2001	2000-2002	2001-2003	2002-2004	2003-2005	2004-2006	2005-2007	2006-2008
UK & ROI	6610	6475	6350	6307	6240	6145	5991	6000
UK	6123	5981	5852	5829	5778	5712	5558	5569
England	4728	4581	4486	4478	4471	4379	4207	4165
Northern Ireland	166	175	162	158	168	217	249	272
Republic of Ireland	487	494	498	477	462	432	433	431
Scotland	880	888	860	843	797	788	789	815
Wales	323	314	318	324	313	301	287	286

Graph C: Rate of Suicides and Undetermined Deaths per 100,000 population UK & ROI 1999-2008

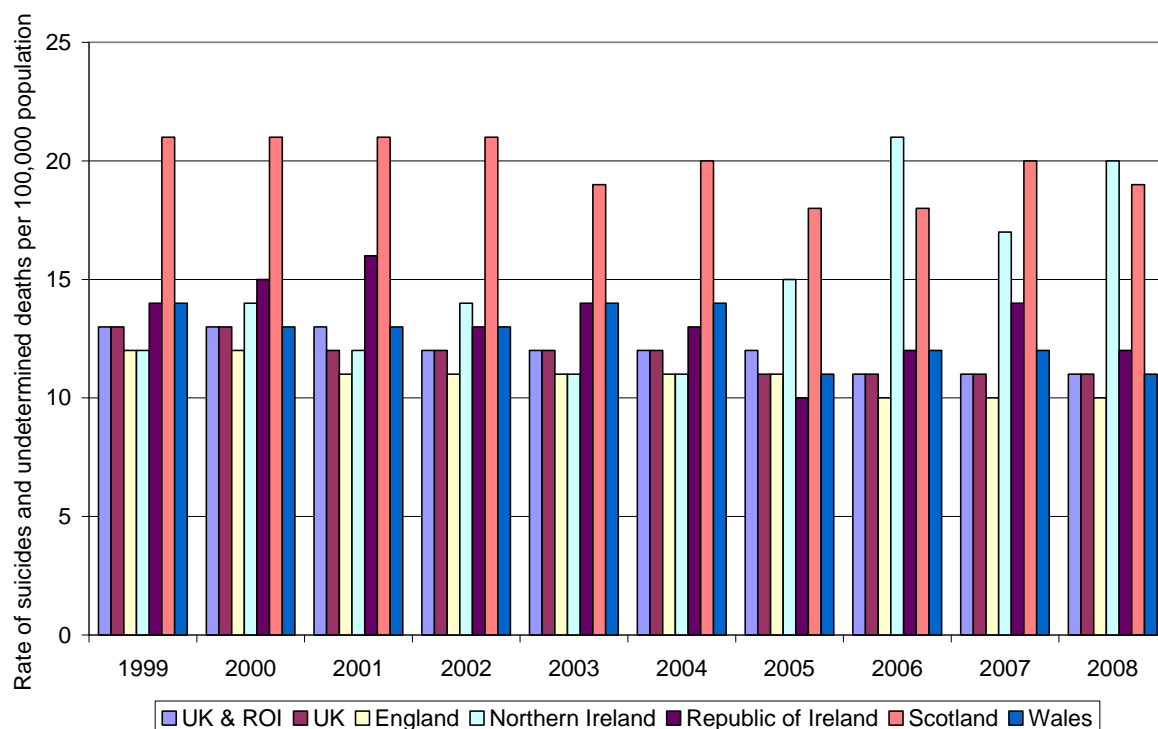


Table D: Summary - Rate of Suicides and Undetermined Deaths per 100,000 population in UK & ROI 1999-2008

	1999	2000	2001	2002	2003	2004	2005	2006	2007	2008
UK & ROI	13	13	13	12	12	12	12	11	11	11
UK	13	13	12	12	12	12	11	11	11	11
England	12	12	11	11	11	11	11	10	10	10
Northern Ireland	12	14	12	14	11	11	15	21	17	20
Republic of Ireland	14	15	16	13	14	13	10	12	14	12
Scotland	21	21	21	21	19	20	18	18	20	19
Wales	14	13	13	13	14	14	11	12	12	11

Graph D: Average Annual Rate of Suicides and Undetermined Deaths per 100,000 population in UK & ROI 1999-2008

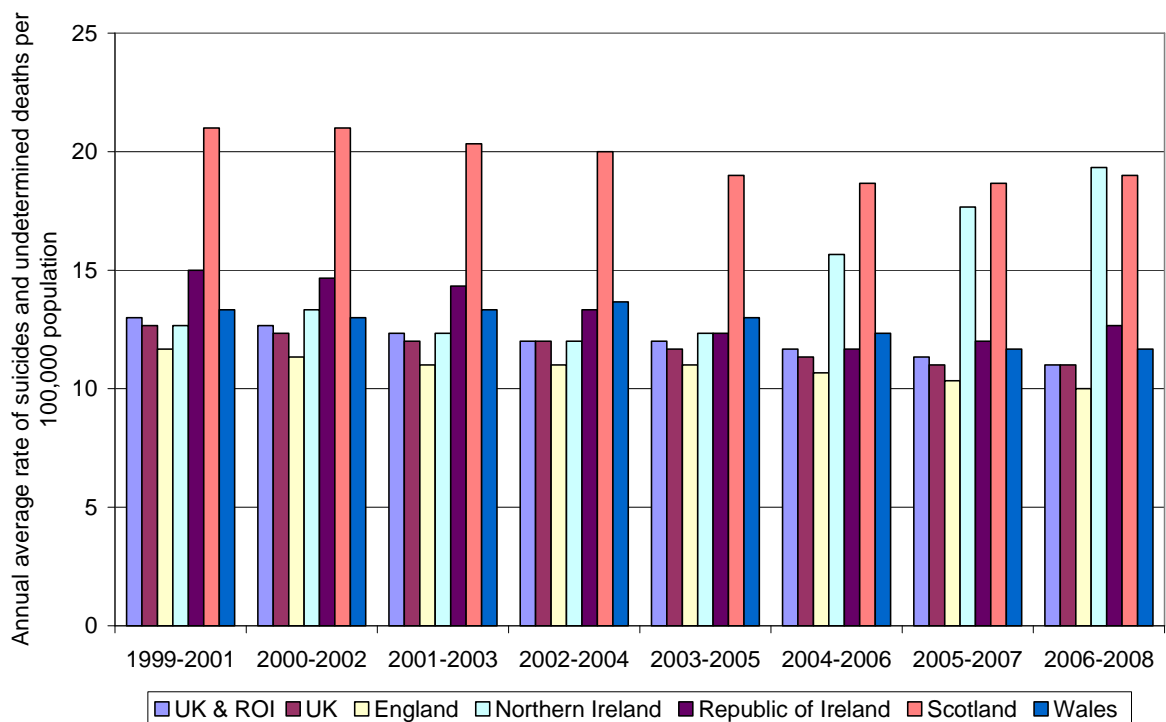


Table E: Average Annual Rate of Suicides and Undetermined Deaths per 100,000 population in UK & ROI 1999-2008

	1999-2001	2000-2002	2001-2003	2002-2004	2003-2005	2004-2006	2005-2007	2006-2008
UK & ROI	13	13	12	12	12	12	11	11
UK	13	12	12	12	12	11	11	11
England	12	11	11	11	11	11	10	10
Northern Ireland	13	13	12	12	12	16	18	19
Republic of Ireland	15	15	14	13	12	12	12	13
Scotland	21	21	20	20	19	19	19	19
Wales	13	13	13	14	13	12	12	12

Table F: Number and Rate of Suicides and Undetermined Deaths by Age and Sex in United Kingdom and Republic of Ireland 1999-2008

	1999	2000	2001	2002	2003	2004	2005	2006	2007	2008
Total	6735	6638	6456	6332	6262	6326	6132	5976	5865	6159
#	11	11	10	10	10	10	9	9	9	9
+	13	13	13	12	12	12	12	11	11	11
Male										
0-14	20	20	16	16	22	15	23	14	21	21
#	0	0	0	0	0	0	0	0	0	0
15-24	660	675	627	581	571	546	508	502	518	547
#	16	17	16	14	14	13	12	11	11	12
25-34	1285	1205	1114	1130	991	912	871	832	854	890
#	26	25	26	26	23	21	21	19	20	20
35-44	1090	1119	1079	1106	1156	1180	1145	1123	1118	1161
#	23	23	23	23	24	24	24	23	23	24
45-54	842	842	889	820	778	829	852	846	807	877
#	21	20	22	20	19	21	21	20	19	20
55-64	539	499	532	524	547	542	562	628	593	603
#	17	16	16	15	16	15	16	17	16	16
65+	687	631	635	568	602	626	598	569	568	580
#	17	16	16	14	14	15	14	13	13	13
Total	5125	4995	4894	4748	4674	4655	4564	4519	4481	4679
#	17	16	16	15	15	15	15	14	14	14
+	21	20	20	19	19	18	18	17	17	18
Female										
0-14	8	9	13	16	15	9	14	11	11	13
#	0	0	0	0	0	0	0	0	0	0
15-24	163	177	144	150	160	144	149	133	114	140
#	4	5	4	4	4	4	4	3	3	3
25-34	288	278	253	278	246	241	239	210	192	236
#	6	6	6	6	6	6	6	5	4	5
35-44	307	315	327	312	321	342	312	274	270	305
#	7	7	7	6	7	7	6	5	5	6
45-54	270	319	296	278	318	330	325	329	305	327
#	7	8	7	7	8	8	8	8	7	7
55-64	186	197	229	210	214	237	242	252	227	211
#	6	6	7	6	6	6	6	7	6	5
65+	381	349	311	341	315	367	287	249	265	248
#	7	6	6	6	6	7	5	4	5	4
Total	1610	1643	1562	1584	1588	1671	1568	1457	1384	1480
#	5	5	5	5	5	5	5	4	4	4
+	6	6	6	6	6	6	6	5	5	5

rate per 100,000 population in the specific age group

+ rate per 100,000 population over 14 years of age

Includes deaths registered in the United Kingdom (including deaths of those usually resident outside the country in which the death occurred. For Republic of Ireland, includes only deaths registered of those usually resident in Republic of Ireland.

Source: Vital Statistics 3 Tables (Office for National Statistics), Vital Events Tables (General Register Office for Scotland), Vital Statistics Tables (Northern Ireland Statistics and Research Agency), Vital Statistics Report (Central Statistics Office), Mid-Year Population Estimates (Office for National Statistics, General Register Office for Scotland, Northern Ireland Statistics and Research Agency), Principal Statistics 1996, 2002, 2006 (Central Statistics Office)

Table G: Number and Rate of Suicides and Undetermined Deaths by Age and Sex in United Kingdom 1999-2008

	1999	2000	2001	2002	2003	2004	2005	2006	2007	2008
Total	6280	6152	5937	5854	5765	5869	5701	5567	5405	5735
#	11	10	10	10	10	10	9	9	9	9
+	13	13	12	12	12	12	11	11	11	11
Male										
0-14	18	19	14	15	20	14	21	13	18	16
#	0	0	0	0	0	0	0	0	0	0
15-24	573	588	537	491	475	463	439	430	445	473
#	16	16	15	13	12	12	11	10	11	11
25-34	1195	1102	1004	1024	919	835	795	756	765	804
#	26	24	25	25	23	21	20	19	19	20
35-44	1030	1039	997	1044	1069	1102	1069	1072	1037	1108
#	23	23	23	24	24	24	23	23	23	24
45-54	795	778	821	765	721	776	782	790	745	820
#	20	20	21	20	19	21	20	20	19	20
55-64	501	461	487	483	502	498	530	586	554	573
#	17	15	16	15	15	15	15	17	16	16
65-74	333	313	311	301	293	295	286	285	257	288
#	15	14	13	13	12	12	12	12	11	12
75+	320	296	292	235	282	311	284	264	280	265
#	20	19	18	14	17	18	16	15	15	14
Total	4767	4600	4465	4361	4288	4299	4211	4201	4103	4347
#	16	16	16	15	15	15	14	14	14	14
+	20	19	19	19	18	18	18	17	17	18
Female										
0-14	7	9	13	14	13	8	13	10	10	13
#	0	0	0	0	0	0	0	0	0	0
15-24	144	155	128	135	144	134	138	112	102	119
#	4	4	4	4	4	4	4	3	3	3
25-34	272	268	240	257	227	224	221	192	179	220
#	6	6	6	6	5	6	6	5	5	6
35-44	292	294	308	297	301	322	298	261	255	282
#	7	7	7	7	7	7	6	6	5	6
45-54	251	301	276	259	295	304	315	312	288	309
#	6	8	7	7	8	8	8	8	7	7
55-64	171	191	211	199	196	220	230	240	209	201
#	6	6	7	6	6	6	6	7	6	5
65-74	174	155	137	141	123	159	120	106	132	114
#	7	6	5	5	5	6	5	4	5	4
75+	195	180	170	192	179	198	155	134	127	130
#	7	6	6	7	6	7	5	5	4	4
Total	1513	1552	1472	1493	1477	1570	1490	1366	1302	1388
#	5	5	5	5	5	5	5	4	4	4
+	6	6	6	6	6	6	6	5	5	5

rate per 100,000 population in the specific age group

+ rate per 100,000 population over 14 years of age

Includes deaths registered in the United Kingdom (including deaths of those usually resident outside the country in which the death occurred).

Source: Vital Statistics 3 Tables (Office for National Statistics, Vital Events Tables (General Register Office for Scotland), Vital Statistics Tables (Northern Ireland Statistics and Research Agency), Mid-Year Population Estimates (Office for National Statistics, General Register Office for Scotland, Northern Ireland Statistics and Research Agency)

Table H: Number and Rate of Suicides and Undetermined Deaths by Age and Sex in England 1999-2008

	1999	2000	2001	2002	2003	2004	2005	2006	2007	2008
Total	4889	4744	4551	4449	4459	4526	4427	4183	4011	4301
#	10	10	9	9	9	9	9	8	8	8
+	12	12	11	11	11	11	11	10	10	10
Male										
0-14	14	15	11	10	18	12	14	10	12	10
#	0	0	0	0	0	0	0	0	0	0
15-24	385	390	374	341	334	331	313	279	299	339
#	13	13	12	11	10	10	9	8	9	10
25-34	912	838	776	744	696	648	607	545	555	561
#	23	21	22	21	20	19	18	16	17	17
35-44	804	795	735	800	839	839	825	804	790	842
#	22	21	20	21	22	22	21	21	20	22
45-54	645	626	645	601	567	596	621	599	551	630
#	20	19	20	19	18	19	20	19	17	19
55-64	401	351	385	365	393	385	412	448	433	452
#	16	14	15	14	14	14	14	15	15	15
65-74	259	251	239	239	228	237	226	224	190	223
#	14	13	12	12	12	12	11	11	10	11
75+	265	248	249	201	241	256	245	225	225	216
#	20	19	18	14	17	18	17	15	15	14
Total	3684	3512	3414	3301	3316	3304	3263	3134	3055	3273
#	15	14	14	14	14	13	13	13	12	13
+	19	18	18	17	17	17	16	15	15	16
Female										
0-14	4	4	10	10	11	7	9	7	6	9
#	0	0	0	0	0	0	0	0	0	0
15-24	111	113	88	93	92	102	101	81	70	75
#	4	4	3	3	3	3	3	2	2	2
25-34	210	207	181	200	168	176	169	150	134	165
#	6	6	5	6	5	5	5	4	4	5
35-44	229	225	234	224	235	240	244	185	191	202
#	6	6	6	6	6	6	6	5	5	5
45-54	204	232	206	198	223	219	241	228	213	221
#	5	7	6	6	7	7	7	7	6	6
55-64	138	167	166	160	155	182	178	191	151	152
#	5	7	6	6	5	6	6	6	5	5
65-74	142	130	107	106	98	126	95	86	87	96
#	6	6	5	5	4	6	4	4	4	4
75+	167	154	145	157	161	170	127	121	104	108
#	7	6	6	7	7	7	5	5	4	4
Total	1205	1232	1137	1148	1143	1222	1164	1049	956	1028
#	5	5	5	5	5	5	5	4	4	4
+	6	6	5	5	5	6	5	5	4	5

rate per 100,000 population in the specific age group

+ rate per 100,000 population over 14 years of age

Includes deaths registered in England of those usually resident in England.

Source: Vital Statistics 3 Tables, Mid-Year Population Estimates (Office for National Statistics)

Table I: Number and Rate of Suicides and Undetermined Deaths by Age and Sex in Northern Ireland 1999-2008

	1999	2000	2001	2002	2003	2004	2005	2006	2007	2008
Total	154	185	158	183	144	146	213	291	242	282
#	9	11	9	11	8	9	12	17	14	16
+	12	14	12	14	11	11	15	21	17	20
Male										
0-14	0	0	0	1	1	0	2	1	3	1
#	0	0	0	1	1	0	1	1	2	1
15-24	31	38	32	22	18	19	30	45	29	38
#	25	31	26	18	14	15	23	34	22	29
25-34	37	40	34	49	25	18	36	48	30	50
#	28	33	28	42	22	16	32	42	26	43
35-44	26	30	28	26	27	26	39	52	41	55
#	22	25	23	21	22	21	31	41	32	44
45-54	17	12	20	29	21	24	31	46	34	38
#	18	12	20	29	20	23	29	42	31	33
55-64	8	13	4	6	10	10	18	25	21	19
#	11	17	5	7	12	12	20	28	23	21
65-74	4	5	10	5	6	4	8	7	8	11
#	7	9	18	9	10	7	13	12	13	17
75+	4	2	4	4	4	4	3	3	9	6
#	12	6	11	11	11	10	8	7	22	14
Total	127	140	132	142	112	105	167	227	175	218
#	15	17	16	17	13	13	20	27	20	25
+	20	22	21	22	17	16	25	34	26	31
Female										
0-14	0	0	1	1	0	0	0	2	1	2
#	0	0	1	1	0	0	0	1	1	1
15-24	9	6	2	2	5	5	3	12	8	7
#	8	5	2	2	4	4	2	10	6	6
25-34	3	9	5	15	8	10	8	7	13	10
#	2	7	4	12	7	9	7	6	11	8
35-44	7	11	4	8	8	7	6	17	11	20
#	6	9	3	6	6	5	5	13	8	15
45-54	4	12	17	8	8	9	9	15	17	12
#	4	12	7	8	8	9	8	14	15	10
55-64	1	3	2	3	2	5	13	7	9	8
#	1	4	2	3	2	6	14	7	9	8
65-74	2	1	4	1	1	4	4	2	7	3
#	3	1	6	2	1	6	6	3	10	4
75+	1	3	1	3	0	1	3	2	1	2
#	2	5	2	5	0	1	4	3	1	3
Total	27	45	26	41	32	41	46	64	67	64
#	3	5	3	5	4	5	5	7	7	7
+	4	7	4	6	5	6	7	9	9	8

rate per 100,000 population in the specific age group

+ rate per 100,000 population over 14 years of age

Includes deaths registered in Northern Ireland (including deaths of those usually resident outside Northern Ireland).

Source: Vital Statistics Tables, Mid-Year Population Estimates (Northern Ireland Statistics and Research Agency)

Table J: Number and Rate of Suicides in Republic of Ireland by Age and Sex 1999-2008

	1999	2000	2001	2002	2003	2004	2005	2006	2007	2008
Total	455	486	519	478	497	457	431	409	460	424
#	13	14	15	11	11	10	10	10	11	10
+	14	15	16	13	14	13	10	12	14	12
Male										
0-14	2	1	2	1	2	1	2	1	3	5
#	0	0	0	0	0	0	0	0	1	1
15-24	87	87	90	90	96	83	69	72	73	74
#	27	27	28	28	29	25	21	22	23	24
25-34	90	103	110	106	72	77	76	76	89	86
#	35	40	43	34	23	25	25	21	24	22
35-44	60	80	82	62	87	78	76	51	81	53
#	24	32	33	22	31	28	27	16	26	16
45-54	47	64	68	55	57	53	70	56	62	57
#	23	31	33	23	24	22	29	21	24	21
55-64	38	38	45	41	45	44	32	42	39	30
#	26	26	31	23	25	25	18	20	19	14
65+	34	22	32	32	27	20	28	20	31	27
#	31	20	29	27	23	17	24	10	15	13
Total	358	395	429	387	386	356	353	318	378	332
#	21	23	25	21	21	19	19	15	18	15
+	28	31	24	27	26	24	24	19	23	18
Female										
0-14	1	0	0	2	2	1	1	1	1	0
#	0	0	0	0	0	0	0	0	0	0
15-24	19	22	16	15	16	10	11	21	12	21
#	6	7	5	5	5	3	3	7	4	7
23-34	16	10	13	21	19	17	18	18	13	16
#	6	4	5	7	6	6	6	5	4	4
35-44	15	21	19	15	20	20	14	13	15	23
#	6	8	8	5	7	7	5	4	5	7
45-54	19	18	20	19	23	26	10	17	17	18
#	9	9	10	8	10	11	4	7	7	7
55-64	15	6	18	11	18	17	12	12	18	10
#	10	4	12	6	10	10	7	6	9	5
65+	12	14	4	8	13	10	12	9	6	4
#	9	11	3	6	10	8	9	3	2	2
Total	97	91	90	91	111	101	78	91	82	92
#	6	5	5	4	4	4	3	4	4	4
+	5	5	5	4	5	5	4	5	4	5

rate per 100,000 population in the specific age group

+ rate per 100,000 population over 14 years of age

Includes deaths registered in Republic of Ireland of those usually resident in Republic of Ireland.

Data for 2006, 2007 and 2008 are provisional.

Source: Vital Statistics Report, Principal Statistics 1996, 2002, 2006 (Central Statistics Office), April 2008 Population Estimate

Table K: Number and Rate of Suicides and Undetermined Deaths by Age and Sex in Scotland 1999-2008

	1999	2000	2001	2002	2003	2004	2005	2006	2007	2008
Total	874	878	887	899	794	835	763	765	838	843
#	17	17	18	18	16	16	15	15	16	16
+	21	21	21	21	19	20	18	18	20	19
Male										
0-14	3	3	2	3	1	2	3	2	3	3
#	1	1	0	1	0	0	1	0	1	1
15-24	108	119	97	97	72	78	70	75	93	71
#	33	36	30	30	22	23	21	22	27	20
25-34	174	157	134	176	124	109	112	119	124	146
#	45	42	40	54	39	35	36	38	40	46
35-44	136	154	168	155	147	182	152	164	147	156
#	35	39	44	41	38	47	40	43	39	42
45-54	91	106	107	99	97	106	81	101	119	109
#	28	32	31	29	29	31	24	29	34	30
55-64	65	63	72	80	66	68	69	78	68	74
#	25	24	27	29	23	23	23	26	22	24
65-74	53	41	42	46	43	32	40	32	39	40
#	27	21	21	23	21	15	19	15	19	19
75+	33	31	24	20	28	32	22	21	27	31
#	28	26	19	16	21	24	16	15	19	21
Total	663	674	646	676	578	609	549	592	620	630
#	27	27	27	28	24	25	22	24	25	25
+	33	34	33	34	29	30	27	29	30	30
Female										
0-14	3	5	1	2	0	0	2	1	2	0
#	1	1	0	0	0	0	0	0	0	0
15-24	19	24	29	30	31	21	32	12	22	24
#	6	8	9	10	10	7	10	4	7	7
25-34	48	40	43	32	35	27	30	26	20	33
#	13	11	12	9	11	8	9	8	6	10
35-44	44	47	60	49	47	58	40	39	47	50
#	11	12	15	12	11	14	10	10	12	13
45-54	35	40	42	38	46	57	50	53	49	56
#	10	12	12	11	13	16	14	15	13	15
55-64	26	17	29	30	26	27	27	25	38	28
#	9	6	10	10	9	9	9	8	12	9
65-74	19	15	19	26	19	19	16	10	29	10
#	8	6	8	11	8	8	6	4	12	4
75+	17	16	18	16	12	17	17	7	11	12
#	8	7	8	7	5	7	7	3	5	5
Total	211	204	241	223	216	226	214	173	218	213
#	8	8	9	9	8	9	8	7	8	8
+	10	9	11	10	10	10	10	8	10	9

rate per 100,000 population in the specific age group

+ rate per 100,000 population over 14 years of age

Source: Vital Events Tables, Mid Year Population Estimates (General Register Office for Scotland)

Table L: Number and Rate of Suicides and Undetermined Deaths by Age and Sex in Wales 1999-2008

	1999	2000	2001	2002	2003	2004	2005	2006	2007	2008
Total	334	321	314	306	334	331	273	299	290	269
#	11	11	11	10	11	11	9	10	10	9
+	14	13	13	13	14	14	11	12	12	11
Male										
0-14	1	1	1	1	0	0	2	0	0	2
#	0	0	0	0	0	0	1	0	0	1
15-24	42	37	31	28	44	30	25	23	19	23
#	23	20	17	15	23	15	13	11	9	11
25-34	67	60	56	54	66	51	35	37	51	42
#	33	29	32	31	39	30	21	23	31	25
35-44	57	55	60	58	52	52	48	48	52	48
#	28	27	30	29	25	25	23	23	26	24
45-54	41	33	47	36	35	49	49	43	41	35
#	21	17	24	19	19	26	26	23	21	18
55-64	25	34	25	32	33	35	30	35	31	24
#	16	22	15	19	18	19	16	18	16	13
65-74	17	16	19	11	16	22	12	21	19	12
#	14	13	15	9	13	17	9	16	14	9
75+	18	15	15	10	8	19	14	15	19	11
#	21	18	17	11	9	20	15	15	19	11
Total	269	253	254	230	254	258	215	222	232	197
#	19	18	18	16	18	18	15	15	16	13
+	23	22	23	20	22	22	18	19	20	16
Female										
0-14	0	0	1	1	2	1	2	0	1	1
#	0	0	0	0	1	0	1	0	0	0
15-24	4	11	7	10	15	5	2	6	2	12
#	2	6	4	5	8	3	1	3	1	6
25-34	11	11	10	8	12	9	12	9	12	10
#	6	6	5	4	7	5	7	5	7	6
35-44	11	10	8	16	10	16	8	19	6	10
#	5	5	4	8	5	7	4	9	3	5
45-54	7	17	9	14	18	18	12	15	8	17
#	4	9	5	7	9	9	6	8	4	8
55-64	5	4	12	5	13	5	9	16	10	9
#	3	2	7	3	7	3	5	8	5	5
65-74	11	9	7	6	4	10	5	8	9	5
#	8	6	5	4	3	7	4	6	6	3
75+	10	6	6	16	6	9	8	4	10	8
#	7	4	4	10	4	6	5	3	6	5
Total	65	68	60	76	80	73	58	77	58	72
#	4	5	4	5	5	5	4	5	4	5
+	5	6	5	6	6	6	4	6	5	6

rate per 100,000 population in the specific age group
 + rate per 100,000 population over 14 years of age

Includes deaths registered in Wales of those usually resident in Wales.

Source: Vital Statistics 3 Tables, Mid Year Population Estimates (Office for National Statistics)