

SAMARITANS

**SUICIDE IN THE UK AND REPUBLIC OF
IRELAND**

STATISTICS 1998-2007

Contents

	Page
Suicide in the UK and Republic of Ireland	3
Graph A: Suicides and Undetermined Deaths in UK and ROI 1998-2007	3
Table A: Summary of Suicides and Undetermined Deaths in UK and ROI 1998-2007 Trends 1998-2007	4
Table B: Suicides and Undetermined Deaths in UK and ROI 1998-2007	5
Table C: Suicides and Undetermined Deaths in United Kingdom 1998-2007	6
Table D: Suicides and Undetermined Deaths in England 1998-2007	7
Table E: Suicides and Undetermined Deaths in Northern Ireland 1998-2007	8
Table F: Suicides in Republic of Ireland 1998-2007	9
Table G: Suicides and Undetermined Deaths in Scotland 1998-2007	10
Table H: Suicides and Undetermined Deaths in Wales 1998-2007	11

Last updated 21st August 2009

Feedback on this pack and further information:

Please direct any feedback on the contents of this report and requests for further information to the Research Officer, Elizabeth Thompson at Samaritans General Office. Direct Line: 020 8394 8330 or email e.thompson@samaritans.org

Media contacts:

If you're working in the media and would like to speak to someone about Samaritans, please contact the press office by calling the main switchboard number at Samaritans General Office, 020 8394 8300, or email r.clark@samaritans.org

For all other enquiries:

Samaritans General Office, The Upper Mill, Kingston Road, Ewell, KT17 2AF.
Switchboard: Tel: 020 8394 8300 or by email admin@samaritans.org

SUICIDE IN THE UK AND REPUBLIC OF IRELAND

This leaflet includes statistics on trends in suicide in each of the nations within the UK and Republic of Ireland. Full tables provide age and sex for suicides in each of the nations for 1998-2007.

SOURCES

England and Wales, Office for National Statistics; Scotland, General Register Office for Scotland, Northern Ireland, NI Statistics Agency; Ireland, Central Statistics Office.

Data includes deaths registered in the appropriate calendar year as deaths from intentional self-harm and deaths from undetermined intent for England, Wales, Northern Ireland and Scotland. Data for the Republic of Ireland refer to intentional self harm only.

INTRODUCTION

As the methods for collecting information on suicide vary widely within the United Kingdom and also between the UK and the Republic of Ireland, international comparisons of suicide rates should be made with caution. Including deaths of undetermined intent, which include coroners' open verdicts, is common research practice and goes some way towards reducing the margins of error created by the varying definitions and rules applied by different countries to arrive at suicide verdicts. However, the procedure is so different in the Republic of Ireland that it is more accurate not to include deaths of undetermined intent.

Trends 1998-2007:

- 15% decrease in the United Kingdom and Republic of Ireland
- 15% decrease in the United Kingdom
- 20% decrease in England
- 61% increase in Northern Ireland
- 11% decrease in the Republic of Ireland
- 5% decrease in Scotland
- 10% decrease in Wales

Graph A and Table A on the following page present the number of suicides registered in each of the nations for each year between 1998 and 2007.

Graph A: Suicides and Undetermined Deaths UK & ROI 1998-2007

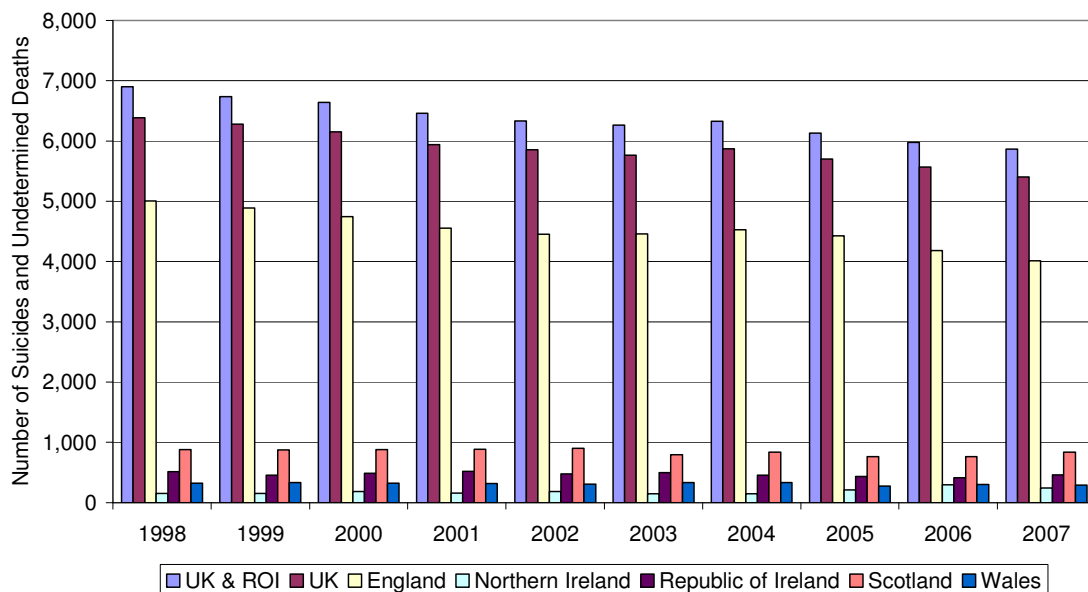


Table A: Summary of Suicides and Undetermined Deaths in UK & ROI 1998-2007

	1998	1999	2000	2001	2002	2003	2004	2005	2006	2007
UK & ROI	6899	6735	6638	6456	6332	6262	6326	6132	5976	5865
UK	6385	6280	6152	5937	5854	5765	5869	5701	5567	5405
England	5008	4889	4744	4551	4449	4459	4526	4427	4183	4011
Northern Ireland	150	154	185	158	183	144	146	213	291	242
Republic of Ireland	514	455	486	519	478	497	457	431	409	460
Scotland	878	874	878	887	899	794	835	763	765	838
Wales	321	334	321	314	306	334	331	273	299	290

NOTES

Data exclude suicides registered in Crown Dependencies (Isle of Man, States of Jersey, States of Guernsey) where there are Samaritans branches.

Data are compiled using codes as described in Table B below.

Table B: ICD Codes for Suicide		
Year(s)	ICD System	Codes for Suicide
1998-2000	ICD-9	E950-E959 (intentional self harm), E980-E989* (undetermined intent) excluding E988.9 (inquest adjourned)
2001-2006	ICD-10	X60-X84 (Intentional self harm), Y10-Y34* (undetermined intent) excluding Y33.9 (inquest adjourned)
2007	ICD-10	X60-X84 (Intentional self harm), Y10-Y34* (undetermined intent)

*deaths of undetermined intent are not included for Republic of Ireland

The individual countries within the United Kingdom and Republic of Ireland release their statistics at different times.

The data presented here are the latest available. As new statistics are released, we add them to our website:

http://www.samaritans.org/about_samaritans/facts_and_figures.aspx

It is anticipated that data for Scotland and the Republic of Ireland will be updated in August and data for England, Wales, and Northern Ireland will be updated in December.

Tables B-H below present suicide and undetermined death data for the United Kingdom and the Republic of Ireland between 1998-2007. Each table presents data on the number of suicides in each year, and includes totals for males and females by age group. The rate of suicide per 100,000 in each age group, for the population as a whole, and for those aged 15 or over in the population are also presented in each table.

Table C: Suicides and Undetermined Deaths in United Kingdom and Republic of Ireland 1998-2007

	1998	1999	2000	2001	2002	2003	2004	2005	2006	2007
Total	6899	6735	6638	6456	6332	6262	6326	6132	5976	5865
#	11	11	11	10	10	10	10	9	9	9
+	13	13	13	13	12	12	12	12	11	11
Male										
0-14	19	20	20	16	16	22	15	23	14	21
#	0	0	0	0	0	0	0	0	0	0
15-24	754	660	675	627	581	571	546	508	502	518
#	19	16	17	16	14	14	13	12	11	11
25-34	1438	1285	1205	1114	1130	991	912	871	832	854
#	29	26	25	26	26	23	21	21	19	20
35-44	1057	1090	1119	1079	1106	1156	1180	1145	1123	1118
#	23	23	23	23	23	24	24	24	23	23
45-54	873	842	842	889	820	778	829	852	846	807
#	21	21	20	22	20	19	21	21	20	19
55-64	502	539	499	532	524	547	542	562	628	593
#	17	17	16	16	15	16	15	16	17	16
65+	605	687	631	635	568	602	626	598	569	568
#	15	17	16	16	14	14	15	14	13	13
Total	5250	5125	4995	4894	4748	4674	4655	4564	4519	4481
#	17	17	16	16	15	15	15	15	14	14
+	21	21	20	20	19	19	18	18	17	17
Female										
0-14	14	8	9	13	16	15	9	14	11	11
#	0	0	0	0	0	0	0	0	0	0
15-24	181	163	177	144	150	160	144	149	133	114
#	5	4	5	4	4	4	4	4	3	3
23-34	295	288	278	253	278	246	241	239	210	192
#	6	6	6	6	6	6	6	6	5	4
35-44	314	307	315	327	312	321	342	312	274	270
#	7	7	7	7	6	7	7	6	5	5
45-54	278	270	319	296	278	318	330	325	329	305
#	7	7	8	7	7	8	8	8	8	7
55-64	187	186	197	229	210	214	237	242	252	227
#	6	6	6	7	6	6	6	6	7	6
65+	532	553	504	484	482	456	484	446	420	426
#	10	10	9	9	9	8	9	8	7	5
Total	1649	1610	1643	1562	1584	1588	1671	1568	1457	1384
#	5	5	5	5	5	5	5	5	4	4
+	6	6	6	6	6	6	6	6	5	5

rate per 100,000 population in the specific age group
 + rate per 100,000 population over 14 years of age

Includes deaths registered in the United Kingdom (including deaths of those usually resident outside the country in which the death occurred). For Republic of Ireland, includes only deaths registered of those usually resident in Republic of Ireland.

Source: Vital Statistics 3 Tables (Office for National Statistics), Vital Events Tables (General Register Office for Scotland), Vital Statistics Tables (Northern Ireland Statistics and Research Agency), Vital Statistics Report (Central Statistics Office), Mid-Year Population Estimates (Office for National Statistics, General Register Office for Scotland, Northern Ireland Statistics and Research Agency), Principal Statistics 1996, 2002, 2006 (Central Statistics Office)

Table D: Suicides and Undetermined Deaths in United Kingdom 1998-2007

	1998	1999	2000	2001	2002	2003	2004	2005	2006	2007
Total	6385	6280	6152	5937	5854	5765	5869	5701	5567	5405
#	11	11	10	10	10	10	10	9	9	9
+	13	13	13	12	12	12	12	11	11	11
Male										
0-14	18	18	19	14	15	20	14	21	13	18
#	0	0	0	0	0	0	0	0	0	0
15-24	640	573	588	537	491	475	463	439	430	445
#	17	16	16	15	13	12	12	11	10	11
25-34	1332	1195	1102	1004	1024	919	835	795	756	765
#	28	26	24	25	25	23	21	20	19	19
35-44	979	1030	1039	997	1044	1069	1102	1069	1072	1037
#	23	23	23	23	24	24	24	23	23	23
45-54	806	795	778	821	765	721	776	782	790	745
#	21	20	20	21	20	19	21	20	20	19
55-64	471	501	461	487	483	502	498	530	586	554
#	16	17	15	16	15	15	15	15	17	16
65-74	297	333	313	311	301	293	295	286	285	257
#	13	15	14	13	13	12	12	12	12	11
75+	272	320	296	292	235	282	311	284	264	280
#	18	20	19	18	14	17	18	16	15	15
Total	4817	4767	4600	4465	4361	4288	4299	4211	4201	4103
#	17	16	16	16	15	15	15	14	14	14
+	21	20	19	19	19	18	18	18	17	17
Female										
0-14	13	7	9	13	14	13	8	13	10	10
#	0	0	0	0	0	0	0	0	0	0
15-24	167	144	155	128	135	144	134	138	112	102
#	5	4	4	4	4	4	4	4	3	3
25-34	285	272	268	240	257	227	224	221	192	179
#	6	6	6	6	6	5	6	6	5	5
35-44	292	292	294	308	297	301	322	298	261	255
#	7	7	7	7	7	7	7	6	6	5
45-54	261	251	301	276	259	295	304	315	312	288
#	7	6	8	7	7	8	8	8	8	7
55-64	177	171	191	211	199	196	220	230	240	209
#	6	6	6	7	6	6	6	6	7	6
65-74	192	174	155	137	141	123	159	120	106	132
#	7	7	6	5	5	5	6	5	4	5
75+	190	195	180	170	192	179	198	155	134	127
#	7	7	6	6	7	6	7	5	5	4
Total	1568	1513	1552	1472	1493	1477	1570	1490	1366	1302
#	5	5	5	5	5	5	5	5	4	4
+	6	6	6	6	6	6	6	6	5	5

rate per 100,000 population in the specific age group

+ rate per 100,000 population over 14 years of age

Includes deaths registered in the United Kingdom (including deaths of those usually resident outside the country in which the death occurred).

Source: Vital Statistics 3 Tables (Office for National Statistics, Vital Events Tables (General Register Office for Scotland), Vital Statistics Tables (Northern Ireland Statistics and Research Agency), Mid-Year Population Estimates (Office for National Statistics, General Register Office for Scotland, Northern Ireland Statistics and Research Agency)

Table E: Suicides and Undetermined Deaths in England 1998-2007

	1998	1999	2000	2001	2002	2003	2004	2005	2006	2007
Total	5008	4889	4744	4551	4449	4459	4526	4427	4183	4011
#	10	10	10	9	9	9	9	9	8	8
+	12	12	12	11	11	11	11	11	10	10
Male										
0-14	13	14	15	11	10	18	12	14	10	12
#	0	0	0	0	0	0	0	0	0	0
15-24	479	385	390	374	341	334	331	313	279	299
#	16	13	13	12	11	10	10	9	8	9
25-34	1037	912	838	776	744	696	648	607	545	555
#	26	23	21	22	21	20	19	18	16	17
35-44	777	804	795	735	800	839	839	825	804	790
#	22	22	21	20	21	22	22	21	21	20
45-54	672	645	626	645	601	567	596	621	599	551
#	21	20	19	20	19	18	19	20	19	17
55-64	363	401	351	385	365	393	385	412	448	433
#	15	16	14	15	18	14	14	14	15	15
65-74	220	259	251	239	239	228	237	226	224	190
#	11	14	13	12	12	12	12	11	11	10
75+	229	265	248	249	201	241	256	245	225	225
#	18	20	19	18	14	17	18	17	15	15
Total	3790	3684	3512	3414	3301	3316	3304	3263	3134	3055
#	16	15	14	14	14	14	13	13	13	12
+	19	19	18	18	17	17	17	16	15	15
Female										
0-14	9	4	4	10	10	11	7	9	7	6
#	0	0	0	0	0	0	0	0	0	0
15-24	113	111	113	88	93	92	102	101	81	70
#	4	4	4	3	3	3	3	3	2	2
25-34	227	210	207	181	200	168	176	169	150	134
#	6	6	6	5	6	5	5	5	4	4
35-44	222	229	225	234	224	235	240	244	185	191
#	6	7	6	6	6	6	6	6	5	5
45-54	205	204	232	206	198	223	219	241	228	213
#	6	5	7	6	6	7	7	7	7	6
55-64	138	138	167	166	160	155	182	178	191	151
#	6	5	7	6	6	5	6	6	6	5
65-74	145	142	130	107	106	98	126	95	86	87
#	7	6	6	5	5	4	6	4	4	4
75+	159	167	154	145	157	161	170	127	121	104
#	7	7	6	6	7	7	7	5	5	4
Total	1218	1205	1232	1137	1148	1143	1222	1164	1049	956
#	5	5	5	5	5	5	5	5	4	4
+	6	6	6	5	5	5	6	5	5	4

rate per 100,000 population in the specific age group

+ rate per 100,000 population over 14 years of age

Includes deaths registered in England of those usually resident in England.

Source: Vital Statistics 3 Tables, Mid-Year Population Estimates (Office for National Statistics)

Table F: Suicides and Undetermined Deaths in Northern Ireland 1998-2007

	1998	1999	2000	2001	2002	2003	2004	2005	2006	2007
Total	150	154	185	158	183	144	146	213	291	242
#	9	9	11	9	11	8	9	12	17	14
+	11	12	14	12	14	11	11	15	21	17
Male										
0-14	1	0	0	0	1	1	0	2	1	3
#	1	0	0	0	1	1	0	1	1	2
15-24	27	31	38	32	22	18	19	30	45	29
#	21	25	31	26	18	14	15	23	34	22
25-34	37	37	40	34	49	25	18	36	48	30
#	28	28	33	28	42	22	16	32	42	26
35-44	19	26	30	28	26	27	26	39	52	41
#	17	22	25	23	21	22	21	31	41	32
45-54	13	17	12	20	29	21	24	31	46	34
#	14	18	12	20	29	20	23	29	42	31
55-64	8	8	13	4	6	10	10	18	25	21
#	11	11	17	5	7	12	12	20	28	23
65-74	7	4	5	10	5	6	4	8	7	8
#	13	7	9	18	9	10	7	13	12	13
75+	1	4	2	4	4	4	4	3	3	9
#	3	12	6	11	11	11	10	8	7	22
Total	113	127	140	132	142	112	105	167	227	175
#	14	15	17	16	17	13	13	20	27	20
+	18	20	22	21	22	17	16	25	34	26
Female										
0-14	0	0	0	1	1	0	0	0	2	1
#	0	0	0	1	1	0	0	0	1	1
15-24	5	9	6	2	2	5	5	3	12	8
#	4	8	5	2	2	4	4	2	10	6
25-34	8	3	9	5	15	8	10	8	7	13
#	6	2	7	4	12	7	9	7	6	11
35-44	12	7	11	4	8	8	7	6	17	11
#	10	6	9	3	6	6	5	5	13	8
45-54	6	4	12	17	8	8	9	9	15	17
#	6	4	12	7	8	8	9	8	14	15
55-64	3	1	3	2	3	2	5	13	7	9
#	4	1	4	2	3	2	6	14	7	9
65-74	3	2	1	4	1	1	4	4	2	7
#	4	3	1	6	2	1	6	6	3	10
75+	0	1	3	1	3	0	1	3	2	1
#	0	2	5	2	5	0	1	4	3	1
Total	37	27	45	26	41	32	41	46	64	67
#	4	3	5	3	5	4	5	5	7	7
+	6	4	7	4	6	5	6	7	9	9

rate per 100,000 population in the specific age group

+ rate per 100,000 population over 14 years of age

Includes deaths registered in Northern Ireland (including deaths of those usually resident outside Northern Ireland).

Source: Vital Statistics Tables, Mid-Year Population Estimates (Northern Ireland Statistics and Research Agency)

Table G: Suicides in Republic of Ireland 1998-2007

	1998	1999	2000	2001	2002	2003	2004	2005	2006	2007
Total	514	455	486	519	478	497	457	431	409	460
#	15	13	14	15	11	11	10	10	10	11
+	16	14	15	16	13	14	13	10	12	14
Male										
0-14	1	2	1	2	1	2	1	2	1	3
#	0	0	0	0	0	0	0	0	0	1
15-24	114	87	87	90	90	96	83	69	72	73
#	35	27	27	28	28	29	25	21	22	23
25-34	106	90	103	110	106	72	77	76	76	89
#	41	35	40	43	34	23	25	25	21	24
35-44	78	60	80	82	62	87	78	76	51	81
#	32	24	32	33	22	31	28	27	16	26
45-54	67	47	64	68	55	57	53	70	56	62
#	32	23	31	33	23	24	22	29	21	24
55-64	31	38	38	45	41	45	44	32	42	39
#	21	26	26	31	23	25	25	18	20	19
65+	36	34	22	32	32	27	20	28	20	31
#	33	31	20	29	27	23	17	24	10	15
Total	433	358	395	429	387	386	356	353	318	378
#	25	21	23	25	21	21	19	19	15	18
+	33	28	31	24	27	26	24	24	19	23
Female										
0-14	1	1	0	0	2	2	1	1	1	1
#	0	0	0	0	0	0	0	0	0	0
15-24	14	19	22	16	15	16	10	11	21	12
#	6	6	7	5	5	5	3	3	7	4
23-34	10	16	10	13	21	19	17	18	18	13
#	5	6	4	5	7	6	6	6	5	4
35-44	22	15	21	19	15	20	20	14	13	15
#	9	6	8	8	5	7	7	5	4	5
45-54	17	19	18	20	19	23	26	10	17	17
#	8	9	9	10	8	10	11	4	7	7
55-64	10	15	6	18	11	18	17	12	12	18
#	7	10	4	12	6	10	10	7	6	9
65+	7	12	14	4	8	13	10	12	9	6
#	5	9	11	3	6	10	8	9	3	2
Total	81	97	91	90	91	111	101	78	91	82
#	5	6	5	5	4	4	4	3	4	4
+	5	5	5	5	4	5	5	4	5	4

rate per 100,000 population in the specific age group

+ rate per 100,000 population over 14 years of age

Includes deaths registered in Republic of Ireland of those usually resident in Republic of Ireland.

Data for 2006 and 2007 are provisional.

Source: Vital Statistics Report, Principal Statistics 1996, 2002, 2006 (Central Statistics Office)

Table H: Suicides and Undetermined Deaths in Scotland 1998-2007

	1998	1999	2000	2001	2002	2003	2004	2005	2006	2007
Total	878	874	878	887	899	794	835	763	765	838
#	17	17	17	18	18	16	16	15	15	16
+	21	21	21	21	21	19	20	18	18	20
Male										
0-14	2	3	3	2	3	1	2	3	2	3
#	0	1	1	0	1	0	0	1	0	1
15-24	83	108	119	97	97	72	78	70	75	93
#	25	33	36	30	30	22	23	21	22	27
25-34	183	174	157	134	176	124	109	112	119	124
#	46	45	42	40	54	39	35	36	38	40
35-44	144	136	154	168	155	147	182	152	164	147
#	38	35	39	44	41	38	47	40	43	39
45-54	94	91	106	107	99	97	106	81	101	119
#	29	28	32	31	29	29	31	24	29	34
55-64	64	65	63	72	80	66	68	69	78	68
#	25	25	24	27	29	23	23	23	26	22
65-74	53	53	41	42	46	43	32	40	32	39
#	27	27	21	21	23	21	15	19	15	19
75+	27	33	31	24	20	28	32	22	21	27
#	23	28	26	19	16	21	24	16	15	19
Total	650	663	674	646	676	578	609	549	592	620
#	26	27	27	27	28	24	25	22	24	25
+	32	33	34	33	34	29	30	27	29	30
Female										
0-14	3	3	5	1	2	0	0	2	1	2
#	1	1	1	0	0	0	0	0	0	0
15-24	31	19	24	29	30	31	21	32	12	22
#	10	6	8	9	10	10	7	10	4	7
23-34	38	48	40	43	32	35	27	30	26	20
#	10	13	11	12	9	11	8	9	8	6
35-44	48	44	47	60	49	47	58	40	39	47
#	13	11	12	15	12	11	14	10	10	12
45-54	37	35	40	42	38	46	57	50	53	49
#	11	10	12	12	11	13	16	14	15	13
55-64	20	26	17	29	30	26	27	27	25	38
#	7	9	6	10	10	9	9	9	8	12
65-74	32	19	15	19	26	19	19	16	10	29
#	13	8	6	8	11	8	8	6	4	12
75+	19	17	16	18	16	12	17	17	7	11
#	8	8	7	8	7	5	7	7	3	5
Total	228	211	204	241	223	216	226	214	173	218
#	9	8	8	9	9	8	9	8	7	8
+	10	10	9	11	10	10	10	10	8	10

rate per 100,000 population in the specific age group

+ rate per 100,000 population over 14 years of age

Source: Vital Events Tables, Mid Year Population Estimates (General Register Office for Scotland)

Table I: Suicides and Undetermined Deaths in Wales 1998-2007

	1998	1999	2000	2001	2002	2003	2004	2005	2006	2007
Total	321	334	321	314	306	334	331	273	299	290
#	11	11	11	11	10	11	11	9	10	10
+	13	14	13	13	13	14	14	11	12	12
Male										
0-14	2	1	1	1	1	0	0	2	0	0
#	1	0	0	0	0	0	0	1	0	0
15-24	41	42	37	31	28	44	30	25	23	19
#	23	23	20	17	15	23	15	13	11	9
25-34	69	67	60	56	54	66	51	35	37	51
#	33	33	29	32	31	39	30	21	23	31
35-44	33	57	55	60	58	52	52	48	48	52
#	17	28	27	30	29	25	25	23	23	26
45-54	27	41	33	47	36	35	49	49	43	41
#	14	21	17	24	19	19	26	26	23	21
55-64	35	25	34	25	32	33	35	30	35	31
#	23	16	22	15	19	18	19	16	18	16
65-74	17	17	16	19	11	16	22	12	21	19
#	13	14	13	15	9	13	17	9	16	14
75+	14	18	15	15	10	8	19	14	15	19
#	17	21	18	17	11	9	20	15	15	19
Total	238	269	253	254	230	254	258	215	222	232
#	17	19	18	18	16	18	18	15	15	16
+	21	23	22	23	20	22	22	18	19	20
Female										
0-14	1	0	0	1	1	2	1	2	0	1
#	0	0	0	0	0	1	0	1	0	0
15-24	8	4	11	7	10	15	5	2	6	2
#	5	2	6	4	5	8	3	1	3	1
25-34	11	11	11	10	8	12	9	12	9	12
#	5	6	6	5	4	7	5	7	5	7
35-44	10	11	10	8	16	10	16	8	19	6
#	5	5	5	4	8	5	7	4	9	3
45-54	13	7	17	9	14	18	18	12	15	8
#	7	4	9	5	7	9	9	6	8	4
55-64	16	5	4	12	5	13	5	9	16	10
#	10	3	2	7	3	7	3	5	8	5
65-74	12	11	9	7	6	4	10	5	8	9
#	8	8	6	5	4	3	7	4	6	6
75+	12	10	6	6	16	6	9	8	4	10
#	8	7	4	4	10	4	6	5	3	6
Total	83	65	68	60	76	80	73	58	77	58
#	6	4	5	4	5	5	5	4	5	4
+	7	5	6	5	6	6	6	4	6	5

rate per 100,000 population in the specific age group

+ rate per 100,000 population over 14 years of age

Includes deaths registered in Wales of those usually resident in Wales.

Source: Vital Statistics 3 Tables, Mid Year Population Estimates (Office for National Statistics)